

WRI's **Dolphin Fleet Monitoring Dashboard** is your "one-stop-shop" to monitor all weather and performance-related data for your fleet from any device with Internet connection. The **Dashboard** is separated into several "tabs" based on the desired information: **Weather/Safety, Performance/Claims, Optimization/Efficiency, Fleet Status, and Reports.**

Weather/Safety

This section allows you to quickly view weather-related information and potential hazards for each vessel over the next 7 days.

- Maximum winds/seas and minimum visibility over the next 7 days
- Potential weather hazards, including severe squalls, sea ice, and tropical cyclones
- Ability to request detailed forecast/routing advice for a specific transit
- Direct access to **Dolphin OnLine** forecast maps, **Voyage Planner**, and **Port Forecasts***
- Projected ETA and ETA "confidence", with comparison to the original ETA*
- C/P or instructed speed for each transit, with detailed voyage RPM Graphs*

*Also Available on the Performance/Claims and Optimization/Efficiency tabs

Performance/Claims

This section provides a snapshot of preliminary speed/consumption performance to-date, along with projections for the total transit. A historical record of actual performance for past transits is also available.

- Specifies loaded condition, instructed speed and consumption
- Analyzes overall speed, "good weather" speed and actual consumption
- Calculates to-date loss/gain of time/bunkers compared to the C/P or instructed values
- Calculates projected loss/gain of time/bunkers compared to the C/P or instructed values over the entire voyage
- View a historical record of actual performance by voyage, with direct access to performance reports

Laden / Economy Condition		Overall Performance		"Good Weather" Performance	
Transit Distance:	1785.83 NM	Transit Distance:	1243.87 NM	Winds: Beaufort 4-5; Seas: 1-2.5 Meters/Less	
Average Speed:	11.37 Knots	Average Speed:	11.41 Knots	Chosen Time:	
Weather Factor:	-0.01 Knots	Weather Factor:	0.13 Knots	4.18 Knots	
Performance Speed:	11.51 Knots	Performance Speed:	11.57 Knots	(Speed Applied for the whole Port)	
Allowable Charter Time:	148.79 Hours	Allowable Charter Time:	154.32 Hours	(Time not calculated Distance divided by Allowed Speed)	
Owner Included All Hours, not Adjusted for Charter Party Limits:	6.34 Hours Lost	Adjusted for Charter Party Limits:	5.53 Hours Lost		

Optimization/Efficiency

This section provides a summary of the "efficiency" of the voyage, including weather/current impacts, projected steaming time and bunker consumption, and projected voyage costs. An analysis of time and bunker "saving" achieved by using WRI's optimum routing services are also available.

- Projected weather/current factors over the next 7 days
- Projected total steaming time, IFO/MDO consumption, and time/LSMGO consumption within ECA
- Estimated hire and bunker costs for each transit
- View actual weather/current factors and time/bunker consumption for past transits.
- View time and bunker "savings" (Voyage Efficiency) achieved by utilizing WRI's optimum routing services
- Add an "event" (hull cleaning, engine maintenance, etc.) to evaluate vessel performance before/after the event

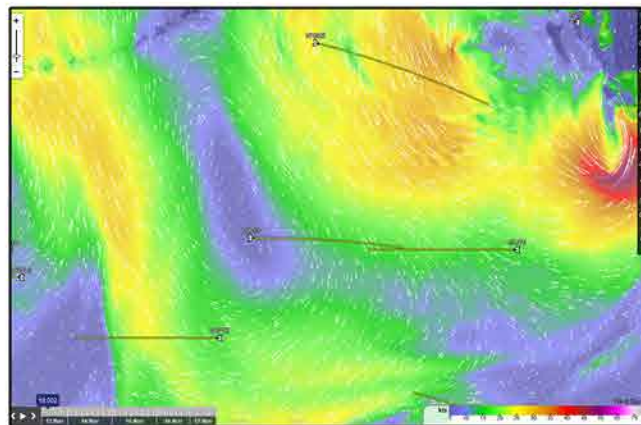
Vessel Name	Saves/kt Analyzed	Fuel Consumption Savings				Estimated Cost Savings		Total Savings (USD)	Total Carbon Savings (Tons)
		IFO (MT)	MDO (MT)	LSMGO (MT)	Time (Hrs)	Operating (USD)	Bunkers (USD)		
Ship 3/SHIP1	3.00%	23.50	68.47	0.01	0.00	\$ 7,345	\$ 25,490	\$ 32,835	213.1
Ship 3/SHIP2	3.00%	14.56	21.70	0.00	0.00	\$ 4,550	\$ 7,768	\$ 12,318	67.6
Ship 3/SHIP3	1.00%	45.38	57.75	3.08	0.00	\$ 14,185	\$ 12,655	\$ 26,840	124.2
Ship 5/SHIP4	1.00%	0.00	0.00	0.00	0.00	\$ -	\$ -	\$ -	0.0
Ship 5/SHIP5	2.00%	23.68	21.80	1.25	0.00	\$ 7,403	\$ 8,271	\$ 15,674	71.3
Ship 6/SHIP6	1.00%	9.24	9.38	0.01	0.00	\$ 2,887	\$ 3,593	\$ 6,380	29.2

Fleet Status

The Fleet Status section allows you to examine all vessels and voyages in our system under your company. You can view the latest position and analyzed weather, view/edit the “service type” being provided, and view/modify upcoming itinerary. You can also start/stop services for a vessel and voyage directly from this tab.

- View all known current/upcoming transits in our system, with latest position/weather
- Modify itinerary, service type, instructed speed/consumption, or any other instructions
- Submit a new voyage transit to the WRI system
- Start/stop services for a specific vessel/voyage

Departure	ETD	Destination	ETA	Instructed Speed	IFO Consumption	Ballast/Laden	Routing/Forecasts	Performance	Port Consumption	EDI
DHASIRA, BOW	19 Nov 2017 16:00Z	PORT LOUIS (Mauritius)	21 Nov 2017 12:53Z	12.25	38.5	Ballast	✓	✓		
PORT LOUIS (Mauritius)	24 Nov 2017 12:00Z	PORT ELIZABETH	01 Dec 2017 02:00Z	12.25	38.5	Ballast	✓	✓		
PORT ELIZABETH	02 Dec 2017 16:00Z	IRAGUAI	05 Dec 2017 02:00Z	12.25	38.5	Ballast	✓	✓		

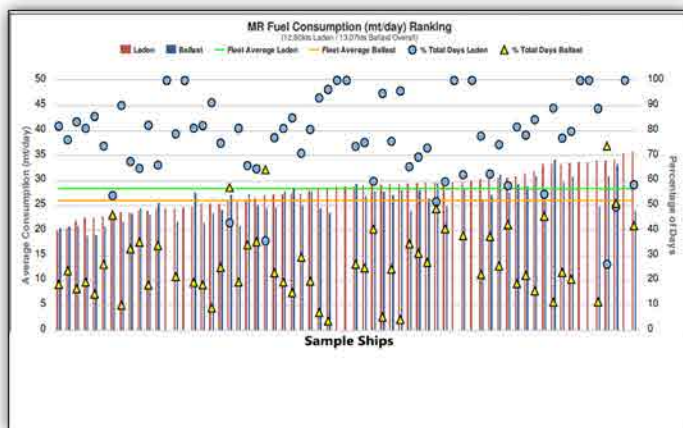


Reports

This section allows you to view all reports and summaries for your entire fleet or individual vessels. The filter options will guide you through the required steps to easily find the product that you require.

- **Weather Prognostics** - Products detailing forecast weather conditions with outlooks for potential “heavy weather” or “good weather”
 - Adverse Weather Summary
 - Projected Good Weather
- **Performance Claims** - Products showing potential savings or underperformance of time/bunkers basis the C/P description
 - Performance Status Reports
 - Voyage Performance Reports
 - Port Consumption Reports
 - Performance Summary
- **Fleet Analysis/Efficiency** - Summary products detailing emissions and optimization which highlight the “efficiency” of your fleet and show the benefits achieved by using WRI optimum routing services
 - Efficiency
 - Emissions
 - Comparisons and Timelines
 - RPM Graphs
 - Voyage Performance Analysis
 - Voyage Report
- **Message Traffic** - Record of actual messages between WRI and the vessel.

Voyage	Departure	Arrival	Wind (knots)	Sea / Seas (meters)	Vis	Squalls	Ice	Tropical				
Click to View Ship	Services Provided	AWAIT Authorization	Dir	Speed	Gust	Ht	Per	Rolling	(mm)	(gms)	Click to View	
Day 1 - 9/4/2017												
Sample Ship 1	BALTIMORE MD	BERMUDA	WNW	34-37	43	N	2.0-2.5	2	None	6	None	No
Sample Ship 2	NEW YORK CITY NY	Boston MA	NE	45-47	30	ESE	4.5-5.0	6	None	7	None	No
Day 2 - 9/5/2017												
Sample Ship 2	CABO SAN LUCAS	In Port	ENE	33-34	30	SSW	1.0-1.5	8	None	8	None	No
Sample Ship 2	CABO SAN LUCAS	MAZATLAN	ESE	39-42	73	SE	3.0-3.5	6	None	8	None	No
Sample Ship 4	BALTIMORE MD	BERMUDA	WNW	35-44	44	NW	5.0-5.5	3	None	8	None	No
Sample Ship 2	Boston MA	In Port	NE	20-23	32	NE	1.0-1.5	3	None	7	None	No
Sample Ship 2	Boston MA	Portland ME	NE	23-26	32	ESE	2.5-3.0	2	None	8	None	No
Day 3 - 9/6/2017												
Sample Ship 6	BELISE CITY	In Port	NE	20-21	25	ENE	0.5-1.0	2	None	9	None	No
Sample Ship 2	CABO SAN LUCAS	MAZATLAN	SE	41-44	47	SSE	3.5-4.0	8	None	7	None	No
Sample Ship 3	MAZATLAN	In Port	SSE	32-35	48	SSW	3.0-3.5	8	None	7	None	No
Sample Ship 4	BALTIMORE MD	BERMUDA	SW	26-31	33	WNW	3.5-4.0	7	None	8	None	No
Sample Ship 2	Boston MA	Portland ME	ENE	17-22	24	ESE	2.5-3.0	7	None	8	None	No
Sample Ship 3	Portland ME	In Port	NNE	10-13	15	ESE	0.0-0.5	8	None	9	None	No
Sample Ship 6	CANTAVECCHIA	In Port	NNE	20-23	26	NW	0.5-1.0	3	None	10	None	No



WRI’s Dolphin Fleet Monitoring Dashboard provides your operations team with a tool to quickly and easily view any weather and performance-related information for your fleet. Our operations team is available 24/7 as well to help answer any questions. Contact us today to discuss how we can assist with **safe and efficient operations** for your fleet.