

WRI's Dolphin Fleet Management Website is an interactive web-based program designed to monitor weather and oceanographic conditions that will impact your fleet. **Dolphin** is available 24/7 from any device with Internet connection, with your fleet positions dead reckoned on all forecast maps extending out to 10 days. **Dolphin** also allows you to monitor the performance and efficiency of your fleet. Speed/Consumption analysis reports, Efficiency/Emissions reports, and much more are summarized in the **Fleet Monitoring Dashboard**.

Dolphin is continuously updated with the latest data, with no "extra" hardware or software required. Both your land-based operations and the vessel can view the same data, which allows for improved communication and decision making.

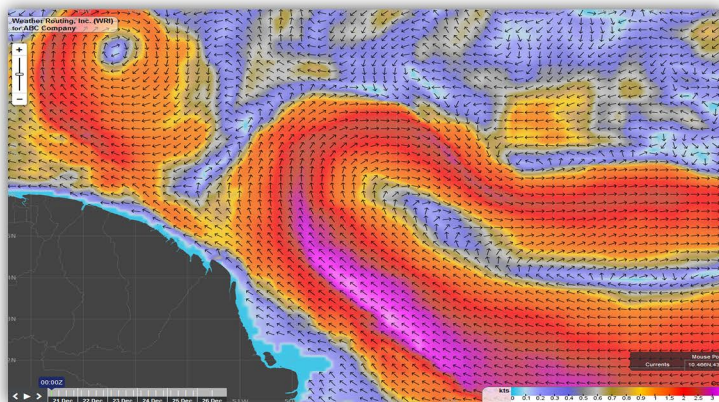
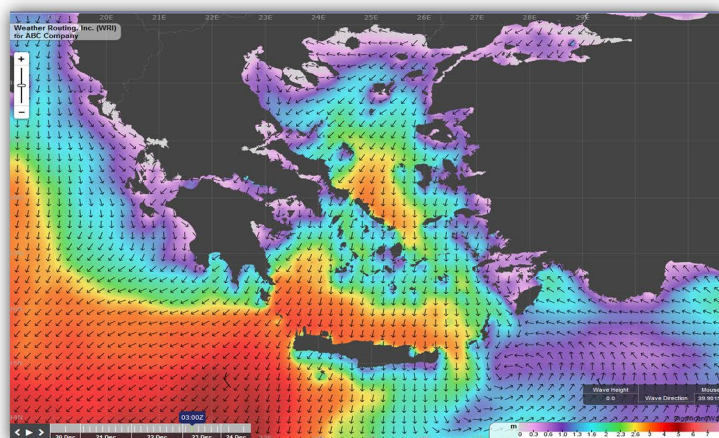
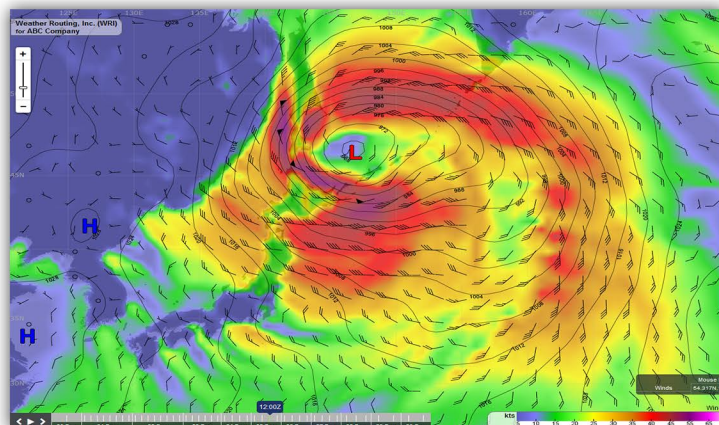
Dolphin Forecast Parameters

- Winds/Seas/Pressure
- Wave Height/Direction
- Sea Ice/Freezing Spray
- Precipitation
- Wave Period
- Ocean Currents
- Rogue Waves
- Air/Sea Temperatures
- Visibility/Cloud Cover
- Squall Threat

Dolphin Additional Products

- Tropical Tracker
- Port Forecasts/Reports
- Fleet Monitoring Dashboard
- Real-time Observations
- Voyage Planner
- Map Menu
- Global Hazards
- AIS Positions

WRI's Dolphin Fleet Management provides the tools required to effectively manage your fleet, allowing for safe and efficient transits.



WRI		Forecast For NEW YORK CITY NY (40.696 N, 74.01 W)		For 02/22 Sunrise: 06:42 AM Sunset: 05:38 PM	
		Created at 02/22/2018 18:38:55 UTC		Tides: 02/22 - 07:00(L) 12:13(H) 12:49(H) 19:07(L) 02/23 - 01:08(H) 08:19(L) 13:50(H) 20:25(L)	
		Refresh Every 30 Minutes			
Hourly Forecast at Port for NEW YORK CITY NY (40.696 N, 74.01 W)		Thu 02/22		Fri 02/23	
UTC Date	UTC Time	18:00	19:00	20:00	21:00
Local Date	Local Time	13:00	14:00	15:00	16:00
Weather		☁	☁	☁	☁
Precipitation (cm)		-	-	0.03	0.05
Squall Threat		-	-	0.05	0.09
Visibility		13	13	8	5
Humidity		75%	82%	85%	88%
Air Temperature		51°F	52°F	53°F	54°F
Wind Direction		ENE	NE	NE	NE
Wind Speed (kts)		19	19	20	20
Gust Speed (kts)		29	29	28	27

WRI Fleet Monitoring Dashboard		Companies		Weather/Safety		Performance/Claims		Optimization/Efficiency		Fleet Status		Reports	
Atlantic		ETD		Service Type		All Vessels							
Ref ID	Vessel	Departure	Destination	ETA	ETD	Service Type	Weather	Performance	Claims	Optimization	Efficiency	Fleet Status	Reports
1712001	SAMPLEX	21 Dec 17 2000Z	NEW YORK	21 Dec 17 2000Z	21 Dec 17 2000Z	Weather	100%	100%	100%	100%	100%	100%	100%
1712002	SAMPLEX	22 Dec 17 2000Z	NEW YORK	22 Dec 17 2000Z	22 Dec 17 2000Z	Weather	100%	100%	100%	100%	100%	100%	100%
1712003	SAMPLEX	23 Dec 17 2000Z	NEW YORK	23 Dec 17 2000Z	23 Dec 17 2000Z	Weather	100%	100%	100%	100%	100%	100%	100%
1712004	SAMPLEX	24 Dec 17 2000Z	NEW YORK	24 Dec 17 2000Z	24 Dec 17 2000Z	Weather	100%	100%	100%	100%	100%	100%	100%
1712005	SAMPLEX	25 Dec 17 2000Z	NEW YORK	25 Dec 17 2000Z	25 Dec 17 2000Z	Weather	100%	100%	100%	100%	100%	100%	100%
1712006	SAMPLEX	26 Dec 17 2000Z	NEW YORK	26 Dec 17 2000Z	26 Dec 17 2000Z	Weather	100%	100%	100%	100%	100%	100%	100%
1712007	SAMPLEX	27 Dec 17 2000Z	NEW YORK	27 Dec 17 2000Z	27 Dec 17 2000Z	Weather	100%	100%	100%	100%	100%	100%	100%
1712008	SAMPLEX	28 Dec 17 2000Z	NEW YORK	28 Dec 17 2000Z	28 Dec 17 2000Z	Weather	100%	100%	100%	100%	100%	100%	100%
1712009	SAMPLEX	29 Dec 17 2000Z	NEW YORK	29 Dec 17 2000Z	29 Dec 17 2000Z	Weather	100%	100%	100%	100%	100%	100%	100%
1712010	SAMPLEX	30 Dec 17 2000Z	NEW YORK	30 Dec 17 2000Z	30 Dec 17 2000Z	Weather	100%	100%	100%	100%	100%	100%	100%