

Weather Routing, Inc. (WRI) offers a variety of forecast services for any site location. Unlike local government sources, our forecasts are tailored for your specific location and requirements.

WRI Combines the best of technology with experienced marine meteorologists available 24/7 to provide accurate, detailed forecasts. We continuously monitor and analyze the latest weather patterns to ensure your vessels and operations are kept **safe and informed** of upcoming conditions.

Detailed Tabular Forecast

10-day Outlook

Synoptic Weather Discussion

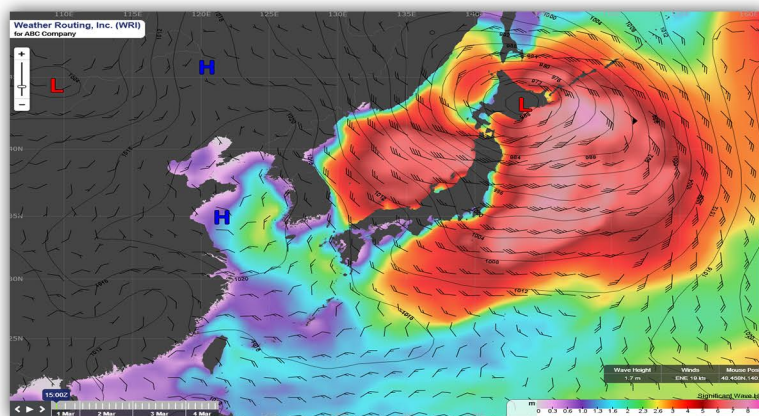
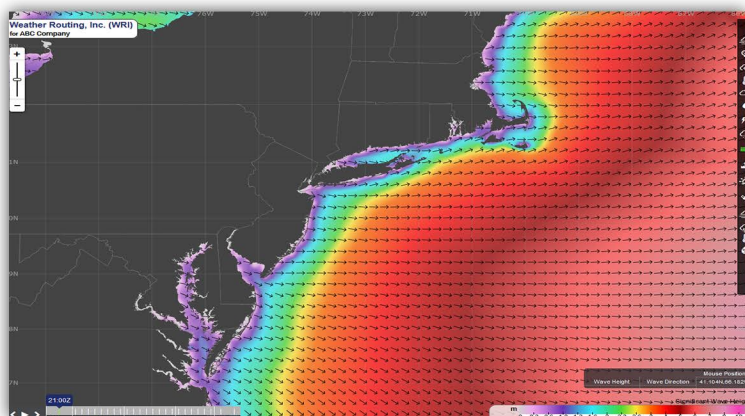
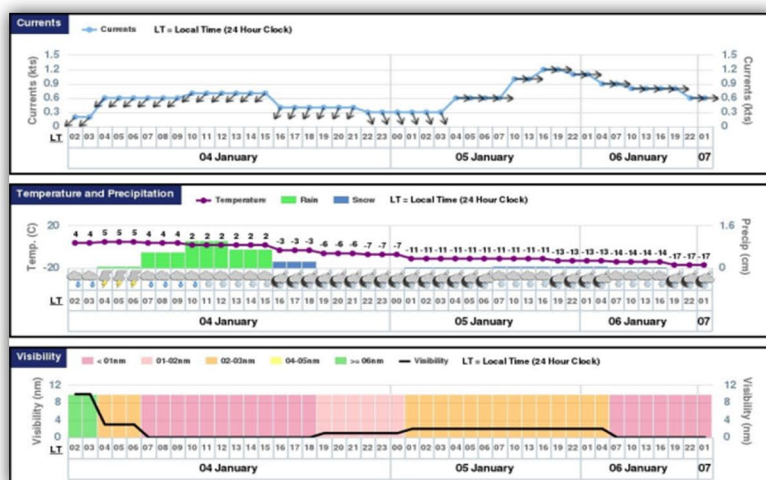
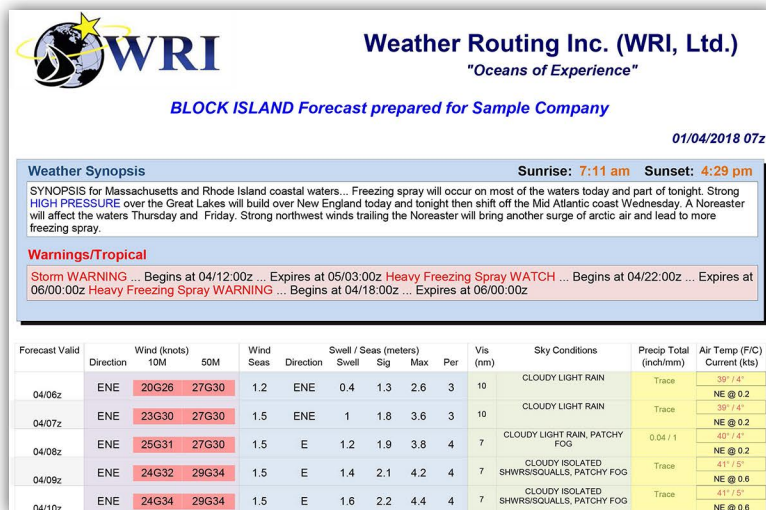
Meteogram/Forecast Maps

Dolphin OnLine /Dolphin OnBoard

Adverse Weather/Tropical Monitoring

Earthquake/Tsunami Alerts

24/7 Consultation



With **WRI's** specialized site/vicinity forecasts, you will always be provided with accurate and timely weather information to ensure your operations continue to run smoothly.