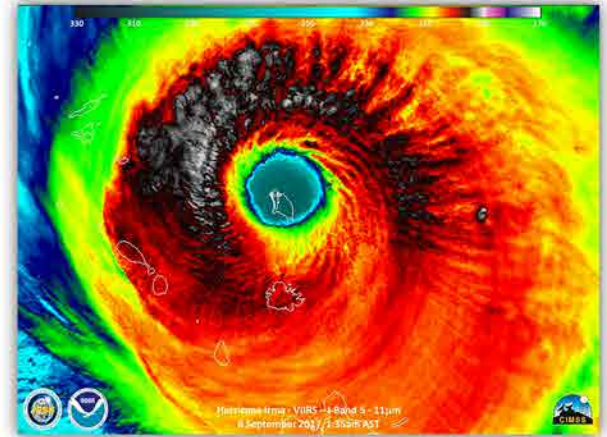
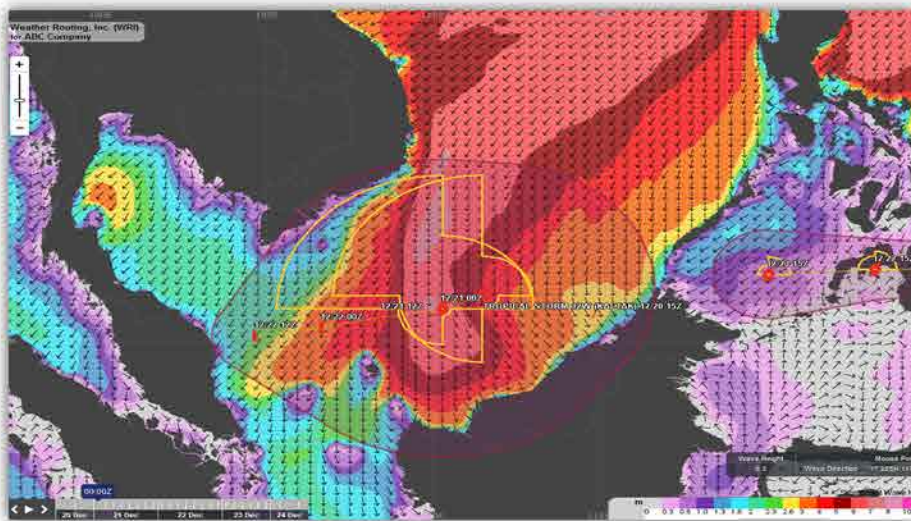
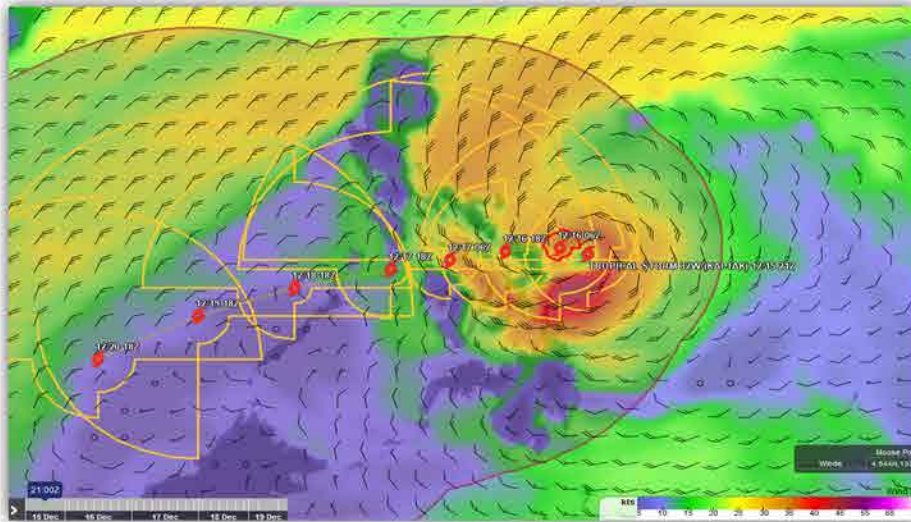


Tropical systems can be a mariner's worst nightmare. Available information from government agencies can be conflicting and lacking timeliness, especially in data-void regions of the world. **WRI's** team of experienced Tropical Meteorologists have been analyzing, forecasting and monitoring these systems for over 55 years. Combining the best of today's technology with years of experience enables **WRI** to provide an accurate analysis and forecast, for safe/efficient transits.

**WRI** maintains constant surveillance of the tropical regions of the world, issuing daily tropical summaries for all seasonally active major ocean basins with all of your affected ships listed. If an area is suspect for tropical development, **WRI** classifies the system as a "tropical low", and issues forecast positions and intensity - often 2-3 days ahead of government agencies. This additional lead time is critical for safe/efficient operations for your fleet to prepare for any route or itinerary changes.



Forecast Time (UTC)	Positions Lat / Lon	Max Winds (Knots)	Gale Radius (nm)			
			NE	SE	SW	NW
02/07 15z	20.3S 54E	45 Gust 55	045	090	090	045
02/08 00z	21.2S 53E	50 Gust 65	105	120	095	055
02/08 12z	22.2S 52.2E	55 Gust 70	130	115	080	060
02/09 00z	23.2S 52.2E	65 Gust 80	130	110	085	070
02/09 12z	24.1S 52.8E	70 Gust 85	135	110	080	075
02/10 12z	25.5S 54.5E	65 Gust 80	145	125	085	070
02/11 12z	26.6S 55.7E	55 Gust 70	150	165	145	095
02/12 12z	27.9S 55.2E	40 Gust 50	160	170	150	075

## WRI's Tropical Advisories:

- **WRI** meteorological discussion/analysis of all tropical systems and areas of concerns.
- Daily tropical summaries for seasonally active basins.
- Table/charts itemizing affected vessels.
- Advisories/routing advice direct to vessels.

## Tropical Tracker on Dolphin:

- **WRI** tropical discussion and analysis.
- Computer model forecast tracks of active systems.
- High resolution wind/sea data.
- Wind speed probability charts.
- Storm surge probability and height.
- Radar and Satellite data.

Contact WRI today to discuss how our Tropical Surveillance services can benefit your fleet and operations!