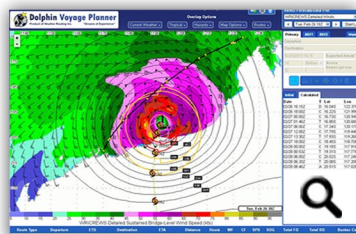


Weather Routing, Inc. (WRI) offers a variety of forecast services for tug/barge and small craft/ferry operators. Whether a slow moving barge transiting across the Gulf of Mexico, a regular ferry run, or a supply vessel fleet off the Nigeria coast, WRI's detailed voyage and site specific forecasts can give the necessary information to maintain safe and efficient operations.

WRI combines the best of technology with a long history of marine forecast experience to provide accurate, detailed forecasts. WRI is continuously monitoring and analyzing weather and ocean current patterns to evaluate for the optimum route: fast and safe.

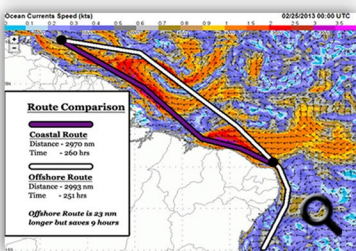
WRI's Detailed Forecast and Route Data for small vessels includes:

- Detailed 5 day forecast with wind, sea and weather conditions.
- Forecast maps showing pressure, wind, seas, and more.
- Real-time and forecast ocean current data.
- Optimum Route considering distance, speed, weather and currents (weather/current factors provided).
- Continuous Tropical Threat monitoring.
- Continuous Heavy Weather monitoring.
- Access to Dolphin website with a suite of detailed analysis and forecast charts for winds, seas, visibilities, ocean currents and more.
- WRI marine meteorologists available 24/7 for consultation.

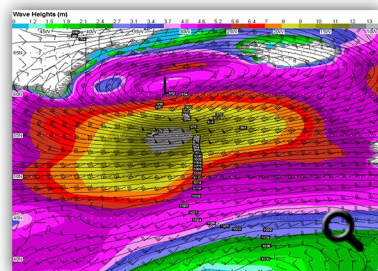


High-resolution tropical analysis on Dolphin

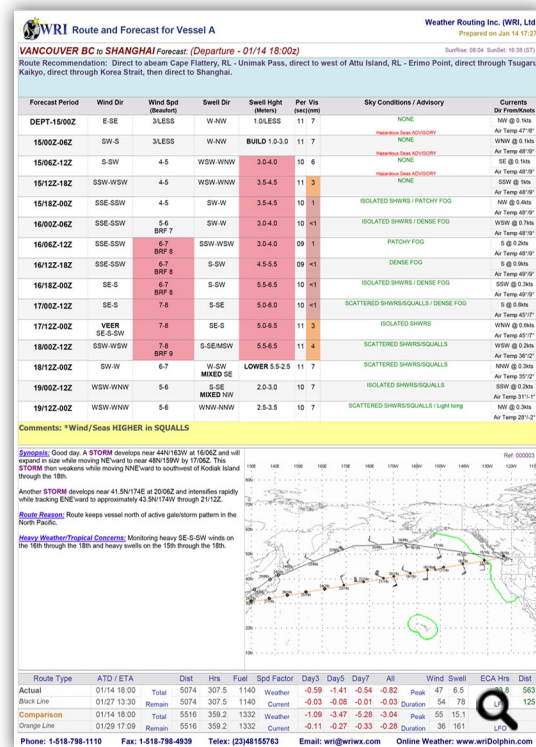
Tropical Monitoring -- Our staff of experienced marine meteorologists are continuously monitoring the tropics for any active or "potential" tropical systems. Tropical lows are classified up to 2 to 3 days ahead of government agencies, giving valuable lead time for potential route and/or



High-resolution ocean current analysis



High-resolution seas analysis on Dolphin



Detailed route/weather advisory

Dolphin website and Dolphin Voyage Planner (DVP) are included with the service, allowing access to a wide variety of forecast tools and WRI's Voyage Planner. On **DVP** route planning can be accomplished for any transit using WRI's high resolution data, keeping your vessel on optimum route.

Tsunami warning and Earthquake statements are immediately relayed to your operations and staff so that proper action can be taken. SMS text alerts can be provided to appropriate management for tsunami warnings by request.

Contact WRI today to discuss the services that we can provide for safe/efficient operations for your tug or small craft!

