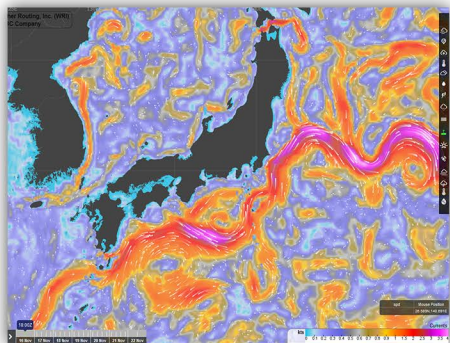
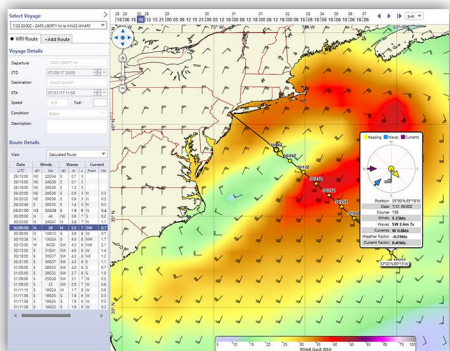
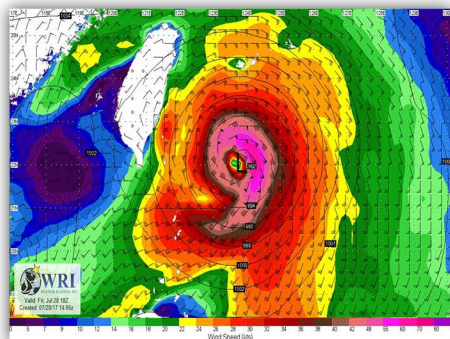


## Worldwide Forecasts

## Optimum Ship Routing

## Performance Analysis

Since 1961, **Weather Routing, Inc. (WRI)** has maintained a proud tradition of fleet routing/weather assistance and performance monitoring services, **ensuring your vessels remain safe and protecting your financial interests**. Our services combine the best of technology with experienced marine meteorologists and performance analysts, and are tailored to meet your specific requirements. With a cost-effective and dependable weather provider like **WRI**, you can concentrate on other aspects of your business.



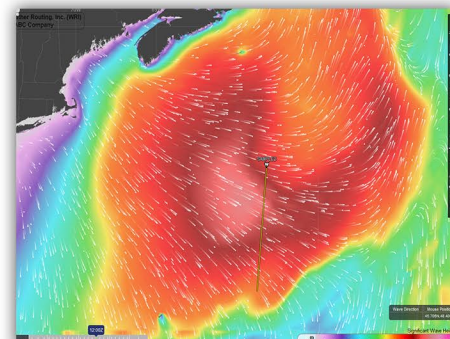
### Optimization/Forecast Services

Pre-Voyage Planning  
 Optimum Routing/Forecasts  
 Site/Vicinity Forecasts  
 Refined Ocean Currents  
 Port Forecasts

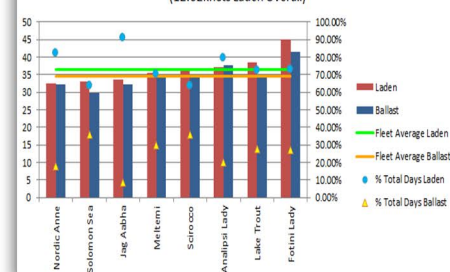
**Dolphin** Website Maps/Charts

**Dolphin OnLine** and **Dolphin OnBoard**

Tropical Summaries/Alerts  
 Adverse Weather Monitoring

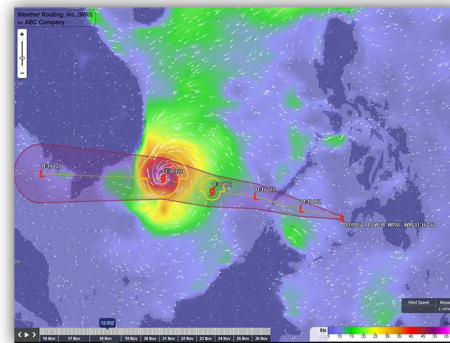


**LRI Fuel Consumption (mt/day) Ranking**  
 (12.62knots Laden Overall)



### Performance Services

Speed/Consumption Performance Claims  
 Voyage Analysis Reports (Excel)  
 Port Bunker Consumption  
 Voyage Reconstructions  
 Deviation Analysis  
 Efficiency/Emission Reports  
**Dolphin** Fleet Monitoring Dashboard  
 Customized Performance Summaries  
 Specialized Reports Available



**Innovative solutions, superior service and unbeatable affordability sets WRI apart from the rest.**

**Contact us today to discuss how our wide range of services can assist your fleet and operations!**

## 24/7 Operations Center

## Save Time and Money

## Marine Meteorologists