

For over 60 years **Weather Routing, Inc.** a 24 hour a day operation, has been the worldwide leader in the yacht forecasting industry. WRI provides detailed routing and forecast information: to yachtsmen worldwide, for transocean crossings, coastal transits, and vicinities.

## Customized Forecasts/Routes

- One on one consultations with a marine meteorologist
- Detailed trip summary, synopsis, conclusions, and route recommendation.
- Forecasts include: winds, sea/swell, swell period clouds / precipitation, temperature, and visibility.
- Meteograms and weather charts are sent for a more visual representation of the forecast.

**CABO SAN LUCAS TO HUATULCO FORECAST. (DEPARTURE - 09/08 06Z)**

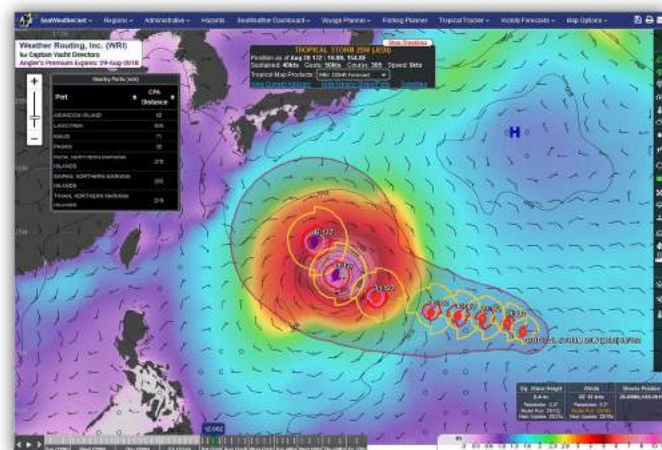
Route Recommendation: Following forecast is for departure tonight on direct routing to abeam Cabo Corrientes. Then most coastal routing to Huatulco.

Forecast Period	Wind Dir	Wind Spd	Wave Dir	Wave Hgt	Sea Hgt	Vis (mi)	Sky Conditions / Advisory	Temp (F/C)	Currents (Dr/Fathoms)
DEPART (09/08 0600Z) TO 100-20W (09/09 0800Z)	E-SE	15-23	SE-S	4-5	5-11	8	SCATTERED CLOUDS	80° / 27°	SSE @ 0.6
TO 100-10W (09/09 0800Z)	ESE-SSE	17-22	SE-S	4-8	11-13	7	PARTLY CLOUDY SCATTERED SHWRS/SQUALLS	85° / 29°	SE @ 0.4
TO 107-20W (09/10 0900Z)	ESE-SSE	19-21	SSE-SSW	3-4	11-13	9	PARTLY CLOUDY SCATTERED SHWRS/SQUALLS	85° / 29°	E @ 0.3
TO 108-10W (09/10 0900Z)	SE-S	13-16	SSE-SSW	3-4	8-11	7	PARTLY CLOUDY ISOLATED SHWRS/SQUALLS	85° / 29°	SSE @ 0.7
TO 105-20W (09/10 0912Z)	SSE-SW	09-14	S-SW	3-3	8-8	7	PARTLY CLOUDY ISOLATED SHWRS/SQUALLS	86° / 30°	SSW @ 1.2
TO 104-00W (09/10 0918Z)	SW-W	08-13	S-SW	2-3	5-5	11	PARTLY CLOUDY ISOLATED SHWRS/SQUALLS	86° / 30°	SSW @ 0.5
TO 103-30W (09/10 0930Z)	WNW-WNW	15-17	SSW-W/SW	2-3	5-7	9	CLOUDY	85° / 29°	WNW @ 0.4
TO 100-40W (09/10 0945Z)	WSW-WNW	10-15	SSW-W/SW	2-3	4-5	11	CLOUDY	85° / 29°	N @ 0.1
TO 98-30W (09/10 0912Z)	SW-W	08-13	SSW-W/SW	2-3	3-5	10	PARTLY CLOUDY	86° / 30°	WNW @ 0.4
TO 97-10W (10/09 0910Z)	BACK SW-SE	05-10	SSW-W/SW	2/LESS	4-6	9	MOSTLY CLOUDY BCG CLEAR	87° / 31°	NNE @ 0.3
TO 96-20W (10/09 1000Z)	NE-E	7/LESS	SSW-W/SW	2/LESS	3-5	8	PARTLY CLOUDY ISOLATED SHWRS/SQUALLS	85° / 28°	NW @ 0.8
ARRIVAL THU 10 (09/10 0900Z)	BACK NE-NW-W	7/LESS	SSE-SSW	2/LESS	10	8	CLEAR	83° / 29°	NW @ 0.3
AT PORT THU 10 (09/10 0900Z)	S-SW	04-09	SSE-SSW	2/LESS	10	8	CLEAR	84° / 29°	NW @ 0.2
AT PORT THU 10 (09/10 0900Z)	SE-S	04-09	SSE-SSW	2/LESS	10	9	PARTLY CLOUDY ISOLATED SHWRS/SQUALLS	85° / 29°	NE @ 0.2
AT PORT THU 10 (09/10 0900Z)	WNW-WSW	7/LESS	SSE-SSW	2/LESS	10	8	PARTLY CLOUDY ISOLATED SHWRS/SQUALLS	84° / 29°	SSE @ 0.2

## WRI PDF Forecast

## WRI Studies & Window Planner:

- Studies detail typical weather for any location and optimal routing based on climatology and vessel constraints.
- Window Planners are daily summaries for clients on lengthy weather delays, addressing departure dates and maximum winds/seas on those dates.



## SeaWeather OnLine Tropics

## Tropical Surveillance & Heavy Weather Alerts:

- Daily tropical summaries for your ocean basin, and special alerts sent if there are any potential threats.
- WRI provides instant emails of: NOAA heavy weather alerts, hazardous Mediterranean weather, and Tsunami alerts.

## SeaWeather OnLine:

- Global forecast data out to 10 days.
- Voyage Planner: Create/compare your own routes.
- Fishing Planner: Location “hotspots” to find your fish.
- Tropical Cyclone Tracker and Tropical Surveillance.
- Download SeaWeather App in the App Store or Google Play.
- **SeaWeather OnBoard:** for low bandwidth users while underway.

**Weather Routing Inc. (WRI, Ltd.)**  
"Oceans of Experience"

**Weather Window Analysis Planner**

Sample Yacht Prepared on Aug 12 08z by SW

Departure: PROVIDENCIALES via PORT ANTONIO, SAN ANDRES Window Report Begins: 02 August  
Destination: CRISTOBAL Window Report Ends: 05 August

Meteorologist's Analysis: Forecast Request - Click Here  
Riding across and north of the Caribbean will begin to weaken starting on the 05th and will continue to weaken through the 08th. A thermal trough near Comstock will also weaken during this time.

Recommended Best Departure: The 05th remains the best overall window for departure. Wind(kts) Threshold: 25 Nite Restrictions: Sea(ft) Threshold: 8

Day (Local Time)	02 (LT)	05 (LT)	08 (LT)	11 (LT)	14 (LT)	17 (LT)	20 (LT)	23 (LT)
02 August	20 9.2	22 9.4	28 9.4	27 9.4	26 9.1	25 8.5	25 8.0	24 8.1
03 August	20 9.2	22 9.4	28 9.4	27 9.4	26 9.1	25 8.5	25 8.0	24 8.1
04 August	26 8.8	24 7.7	25 7.3	27 8.0	24 7.1	24 6.5	24 6.0	24 6.0
05 August	30 7.3	27 6.5	27 6.5	28 6.5	22 5.4	22 5.4	22 5.4	22 5.4
06 August	24 5.3	22 5.1	22 5.1	20 3.9	20 3.9	20 3.9	20 3.9	20 3.9

## WRI Window Planner