



**Forecast for M/Y Sample**

Prepared on Oct 13 13:56z  
 By JD

Voyage Summary		Dist (nm)		Conditions Above Constraints			Avg Ocean Current	Fuel Total	Tropical Impact and/or
Departure / Destination		ETD / ETA	Trip (hrs)	Peak	% of Trip	Weather Impacts	Impact	(gals/ltrs)	Advisory within 60nm
TENERIFE		05/18z	1795	Wind(kts)	23	0%	Favorable	0.07 knots	TROPICAL STORM GONZALO
FORT LAUDERDALE FL		21/00z	366	Seas (ft)	9	0%	Favorable	Favorable	

Detailed information regarding your forecast and recommendations is further down on the following pages.

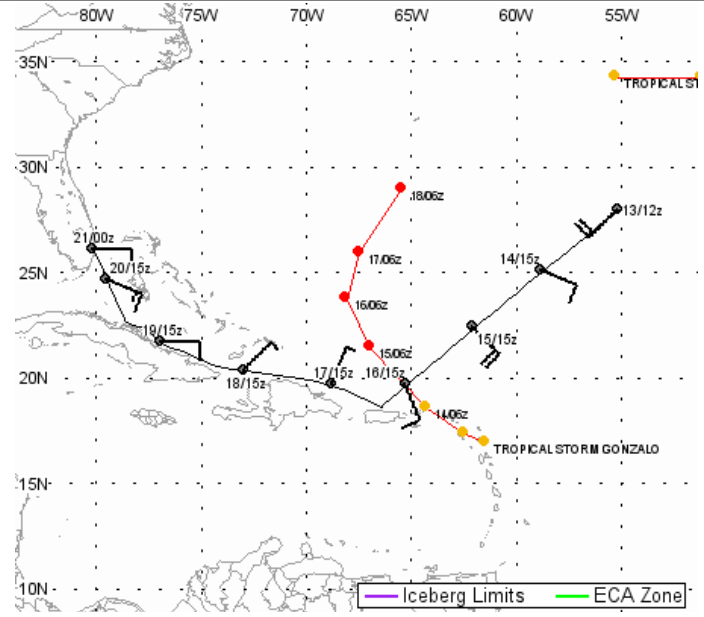
**Synopsis:** Good day, and thanks for your intentions via our phone call today. Please see the sections on **TROPICAL STORM** Gonzalo and Fay. Please also advise total fuel onboard and approximate daily consumption at a speed of 10kts so we can keep your fuel situation in mind, thank you.

Outside of the tropics, A weak ridge of **HIGH PRESSURE** will be located from the se'n Caribbean NE'ward to 25N/49W on the 14th. This will merge with another ridge that will extend from east of the Lesser Antilles N'ward to Newfoundland on the 17th. This ridge then shifts E'ward, and will extend from the Lesser Antilles NE'ward to 35N/35W on the 19th. More broad **HIGH PRESSURE** ridging is expected from the SE'r'n U.S. SE'ward to Puerto Rico on the 18th and 19th.

**Conclusions:** Tropical **STORM** Fay will move to your NE over the next few days, and swells from this system will gradually diminish for you. We do need to alter your route to Fort Lauderdale. The previous route to Matanilla Shoal is no longer valid. If you took this route, the potential for Gonzalo to directly hit you would increase dramatically, and the system may be a Category 2 or 3 by that time. If you took a more WNW course to increase berth from system, present larger swells may slow you down, which would cause potential major issues with Gonzalo. And diverting to Bermuda is not an option either, as they may be directly threatened by the system in 5 days.

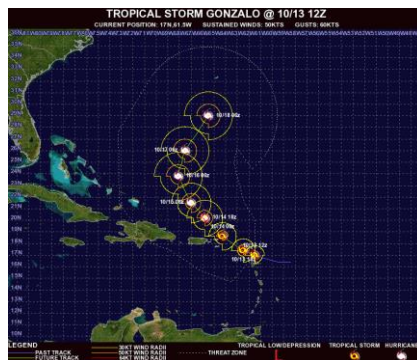
As discussed, the best option is to take a direct route SW'ward to just north of San Juan, Puerto Rico, then direct- Fort Lauderdale via the Old Bahama Channel. This will provide the safest route for you and eliminate any concerns if you were slowed north of Gonzalo. Also, a speed of 10kts is valid and would give more time for Gonzalo to move NW'ward, and would help for your fuel situation. You could also stop in San Juan or St. Thomas if needed for fuel.

Understand from our conversation that you will take this route. Please keep us advised on your progress, thank you. Assume you would like your next update on the 15th - please advise if wish different, thank you.



AT 13/13Z, **TROPICAL STORM** GONZALO WAS CENTERED NEAR 17.0N 61.5W (20NM ESE OF ANTIGUA), MOVING W'WARD AT 10KTS, WITH MAXWINDS 60- 65KTS. **GALE** RADIUS IS 60NM N'RN SEMICIRCLE, 0NM SW'RN QUADRANT, 60NM SE'RN QUADRANT. **TROPICAL STORM** Gonzalo continues to get better organized, and will slowly strengthen while moving WNW'ward through the Leeward Islands today. On the 14th, the system will be located to the NE of Puerto Rico and will likely have intensified into a **HURRICANE**. The system will then continue to strengthen while making a turn to the NW and NNW'ward through the end of the week, then turns NNE'ward towards Bermuda by the first part of the weekend.

Forecast Time (UTC)	Positions Lat / Lon	Max Winds (Knots)	Gale Radius (nm)			
			NE	SE	SW	NW
10/13 09z	16.8N 60.9W	50 Gust 60	050	040	000	050
10/13 18z	17.4N 62.5W	55 Gust 65	060	060	030	060
10/14 06z	18.6N 64.3W	60 Gust 75	070	070	040	070
10/14 18z	20.2N 65.8W	70 Gust 85	090	090	060	090
10/15 06z	21.5N 67.0W	75 Gust 90	100	100	070	100
10/16 06z	23.8N 68.1W	85 Gust 105	120	120	090	120
10/17 06z	26.0N 67.5W	95 Gust 115	120	120	090	120
10/18 06z	29.0N 65.5W	90 Gust 110	120	120	090	120



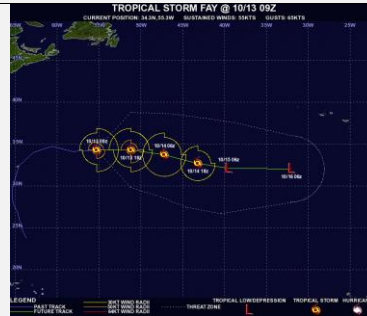
**Closest Point of Approach (CPA):**  
 WNW 274nm  
 Time of CPA @ 16/00z

# Forecast for M/Y Sample

Prepared on Oct 13 13:56z  
By JD

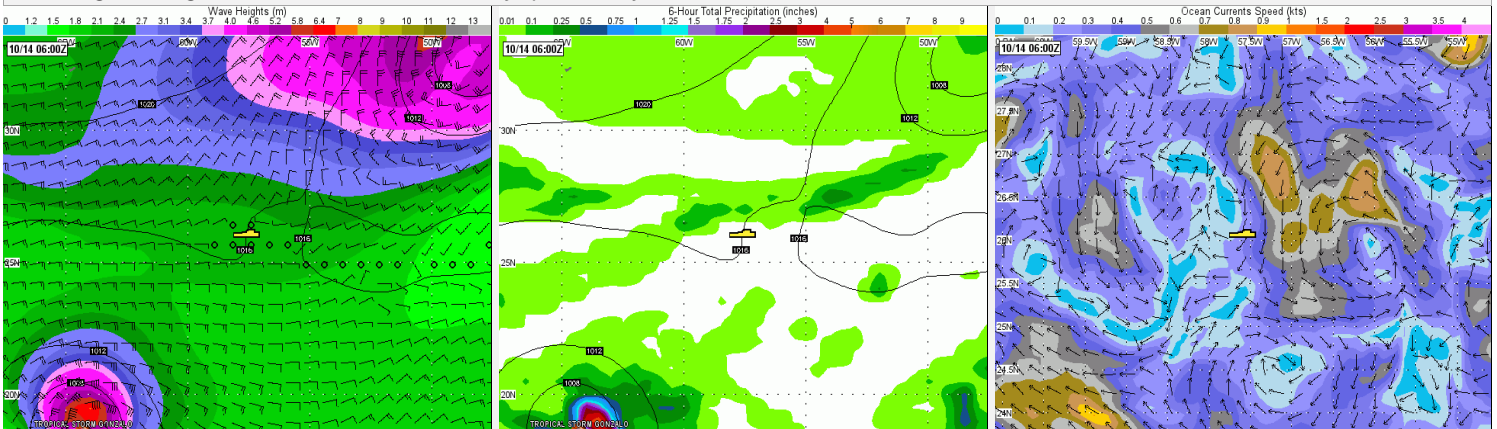
AT 13/13Z, **TROPICAL STORM** FAY WAS CENTERED NEAR 34.3N 55.3W (520NM ENE OF BERMDUA), MOVING E'WARD AT 23KTS, WITH MAXWINDS 55- 65KTS. **GALE** RADIUS IS 120NM W'RN SEMICIRCLE, 150NM E'RN SEMICIRCLE. **TROPICAL STORM** Fay will move E'ward, then turn more ESE'ward through the end of the week. The system is starting to become extratropical, and will become fully **EXTRATROPICAL** by later today.

Forecast Time (UTC)	Positions Lat / Lon	Max Winds (Knots)	Gale Radius (nm)			
			NE	SE	SW	NW
10/13 09z	34.3N 55.3W	55 Gust 65	150	150	100	120
10/13 18z	34.3N 51.2W	50 Gust 60	130	150	120	150
10/14 06z	33.7N 47.2W	40 Gust 50	120	150	150	150
10/14 18z	32.7N 43.2W	35 Gust 45	090	120	120	120
10/15 06z	32.1N 39.5W	30 Gust 40	000	000	000	000
10/16 06z	32.0N 32.0W	25 Gust 35	000	000	000	000



**Vessel Remains at SAFE BERTH from the System.**

Click Image for Larger View. Forecast Charts to 8 days provided by **REQUEST**.



All WRI clients have access to their SeaWeather Subscriptions, Trials, and Lite accounts at [www.SeaWeather.net](http://www.SeaWeather.net). Login to view more!

## TENERIFE TO FORT LAUDERDALE FL FORECAST: (DEPARTURE - 10/05 18z)

SunRise: 10:39 SunSet: 22:15 (ST)

Route Recommendation: Recommend commence immediate RL - just north of San Juan (18-41N/66-28W), direct to/through Old Bahama Channel, through Old Bahama Channel to Fort Lauderdale at a speed of 10kts.

Forecast Period	Wind Dir	Wind Spd (Knots)	Swell Dir	Seas Hght Swell Hght (Feet)	Per(sec) Viz (nm)	Sky Conditions / Advisory	Temp F / C	Currents Dir From/Knots
TO 55-31W (13/12z 13/14LT)	SSW-W	13-18	NW-W	2-3 6-8	11 8	PARTLY CLOUDY <b>ISOLATED SHWRS/SQUALLS</b>	81° / 27°	NW @ 0.7
TO 55-56W (13/15z 13/17LT)	SW-W	11-16	W-NW	1-3 6-8	11 8	PARTLY CLOUDY <b>WIDESPREAD SHWRS/SQUALLS</b>	81° / 27°	NNW @ 0.2
TO 56-21W (13/18z 13/20LT)	SW-W	09-14	WNW-NNW	1-3 7-9	11 9	PARTLY CLOUDY <b>WIDESPREAD SHWRS/SQUALLS</b>	81° / 27°	WNW @ 0.5
TO 56-46W (13/21z 13/23LT)	<b>VEER</b> W-NW-N	08-13	WNW-NNW	2/LESS 7-9	11 9	PARTLY CLOUDY <b>SCATTERED SHWRS/SQUALLS</b>	82° / 28°	NE @ 0.4
TO 57-11W (14/00z 14/02LT)	WNW-NNW	07-12	NW-N	2/LESS 7-9	11 9	PARTLY CLOUDY <b>SCATTERED SHWRS/SQUALLS</b>	81° / 27°	N @ 0.9
TO 57-35W (14/03z 14/05LT)	W-SW	06-11	NW-N	2/LESS 7-9	10 10	PARTLY CLOUDY <b>ISOLATED SHWRS/SQUALLS</b>	81° / 27°	N @ 0.8
TO 58-00W (14/06z 14/08LT)	<b>BACK</b> SW-S-SE	05-10	NW-N	2/LESS 6-9	9 10	CLEAR	81° / 27°	SE @ 0.2
TO 58-25W (14/09z 14/11LT)	SE-E	05-10	NNW-N	2/LESS 6-8	9 10	CLEAR BCM CLOUDY	81° / 27°	ENE @ 0.2
TO 58-49W (14/12z 14/14LT)	E-SE	06-11	N-NNE	2/LESS 6-8	9 10	CLOUDY	81° / 27°	NW @ 0.1

Phone: 1-518-798-1110

Fax: 1-518-798-4939

Email: [wri@wriwx.com](mailto:wri@wriwx.com)

Web: [www.wriwx.com](http://www.wriwx.com)



Long Range Outlook. Call WRI for Further Updates.

Above Vessel's Constraints

Vicinity At Port

# Forecast for M/Y Sample

Prepared on Oct 13 13:56z

By JD

TO 59-14W (14/15z 14/17LT)	ESE-ENE	07-12	N-NNE	2/LESS 6-8	9 10	CLOUDY	82° / 28°	NNE @ 0.2
TO 59-38W (14/18z 14/20LT)	ENE-ESE	08-13	N-NNE	2/LESS 6-8	9 10	CLOUDY ISOLATED SHWRS/SQUALLS	82° / 28°	E @ 0.3
TO 60-03W (14/21z 14/23LT)	E-NE	09-14	N-NNE	2/LESS 6-8	9 10	CLOUDY ISOLATED SHWRS/SQUALLS	83° / 28°	NE @ 0.2
TO 60-27W (15/00z 15/02LT)	NE-E	11-16	N-NE	1-3 6-8	9 10	MOSTLY CLOUDY ISOLATED SHWRS/SQUALLS	83° / 28°	NE @ 0.5
TO 60-51W (15/03z 15/05LT)	ENE-ESE	12-17	ENE-NNE	2-3 6-8	9 9	MOSTLY CLOUDY ISOLATED SHWRS/SQUALLS	83° / 28°	N @ 0.7
TO 61-39W (15/06z 15/08LT)	E-SE	13-18 GUSTS 20	E-SE MIXED NE	2-4 6-8	8 9	CLOUDY ISOLATED SHWRS/SQUALLS	83° / 28°	NNW @ 0.5
TO 62-27W (15/12z 15/14LT)	E-SE	18-23	ESE-SSE	3-4 7-9	7 9	CLOUDY ISOLATED SHWRS/SQUALLS	84° / 29°	ESE @ 0.3
TO 63-15W (15/18z 15/20LT)	SE-S	18-23	SE-S	3-4 7-9	8 9	CLOUDY BCM PARTLY CLOUDY	84° / 29°	S @ 0.5 TROPICAL STORM GONZALO(W@287nm)
TO 64-03W (16/00z 16/02LT)	SE-S	14-19 GUSTS 21	SE-S	2-4 7-9	7 10	CLOUDY WIDESPREAD SHWRS/SQUALLS	83° / 28°	SW @ 1 TROPICAL STORM GONZALO(WNW@274nm)
TO 64-50W (16/06z 16/08LT)	S-SW	15-20	S-SW	2-4 6-8	7 9	CLOUDY SCATTERED SHWRS/SQUALLS	84° / 29°	NE @ 0.5 TROPICAL STORM GONZALO(NW@290nm)
TO 65-37W (16/12z 16/14LT)	SSW-SSE	13-18	SSE-SSW	2-3 5-8	7 10	MOSTLY CLOUDY ISOLATED SHWRS/SQUALLS	84° / 29°	NE @ 0.6 TROPICAL STORM GONZALO(NW@313nm)
TO 66-24W (16/18z 16/20LT)	SSE-ESE	10-15	N-NNE	1-3 5-7	10 9	MOSTLY CLOUDY ISOLATED SHWRS/SQUALLS	83° / 28°	S @ 0.6 TROPICAL STORM GONZALO(NNW@351nm)
TO 67-20W (17/00z 17/02LT)	ESE-SSE	05-10	N-NNE	2/LESS 5-7	10 9	MOSTLY CLOUDY ISOLATED SHWRS/SQUALLS	81° / 27°	ENE @ 0.7 TROPICAL STORM GONZALO(N@412nm)
TO 68-18W (17/06z 17/08LT)	SSE-SSW	07-12	N-NE	2/LESS 5-7	10 10	MOSTLY CLOUDY ISOLATED SHWRS/SQUALLS	83° / 28°	WNW @ 0.1 TROPICAL STORM GONZALO(N@415nm)
TO 69-18W (17/12z 17/14LT)	VEER SW-NW-NE	08-13	N-NE	2/LESS 5-7	10 10	CLOUDY BCM PARTLY CLOUDY WIDESPREAD SHWRS/SQUALLS	82° / 28°	NW @ 0.2 TROPICAL STORM GONZALO(N@444nm)
TO 70-20W (17/18z 17/20LT)	NNE-ENE	07-12	N-NE	2/LESS 4-6	11 9	MOSTLY CLOUDY WIDESPREAD SHWRS/SQUALLS	81° / 27°	W @ 0.4
TO 71-23W (18/00z 18/02LT)	E-SE	06-11	N-NE	2/LESS 4-6	11 8	MOSTLY CLOUDY WIDESPREAD SHWRS/SQUALLS	80° / 27°	NNW @ 0.3
TO 72-25W (18/06z 18/08LT)	ESE-SSE	05-10	ENE-ESE	Combined 2-4	11 8	CLOUDY BCM PARTLY CLOUDY SCATTERED SHWRS/SQUALLS	82° / 28°	W @ 0.5
TO 73-28W (18/12z 18/14LT)	ESE-ENE	05-10	ESE-ENE	Combined 2-3	9 10	CLEAR	82° / 28°	NE @ 0.4
TO 73-59W (18/18z 18/20LT)	NNE-ENE	05-10	E-NE	Combined 1-3	9 10	CLEAR	82° / 28°	ENE @ 0.3

Comments: \*Wind/Seas HIGHER in SQUALLS